



F1M 015-120 Series T-Type Hydraulic Filter Assemblies

Medium-Pressure Hydraulic Filter Assemblies



Features

- Utilize PTI PG series elements (sold separately)
- 3,000 psi (207 bar) operating pressure
- 15, 25, 30, 50, 80 & 120 gpm (57, 95, 114, 189, 303 & 454 lpm) nominal flow rates
- Elements available with $\beta_{X(c)} \geq 1000$ Glas-Tech III[®] media
- Optional 100 psid (6.9 bar) bypass valve
- Optional visual & visual/electrical indicators



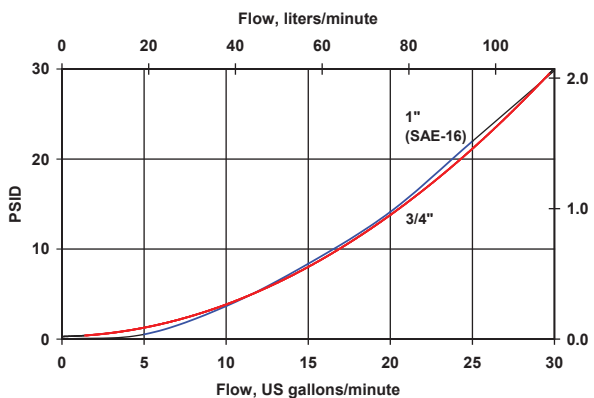
Technical Data

- **Pressure & Temperature Rating**
 - Operating Pressure: 3,000 psi (207 bar)
 - Proof Pressure: 4500 psi (310 bar)
 - Burst Pressure: 7500 psi (517 bar)
 - Operating Temperature: -40°F to +250°F (-40°C to +121°C)
- **Materials of Construction**
 - Head: Aluminum Alloy
 - Bowl: Steel
- **Bypass Valve**
 - Bypass Valve Setting: 50 psid (3.4 bar) ±10%
Integrated Into Housing
- **Differential Pressure Indicators**
 - Visual Indicator: 32 psid (2.2 bar) ±10% activation, manual reset
32 psid (2.2 bar) ±10% activation, self reset
 - Visual Electrical Indicator: 32 psid (2.2 bar) ±10% activation Contacts -
SPDT NO or NC, DIN Connector
 - Thermal Lockout Options: Lockout below 70°F (21°C)
Release above 95°F (35°C)
Contacts - SPDT NO or NC, DIN Connector
- **Seal Material Options**
 - Seal Material: Buna
Ethlene Propylene
Viton®

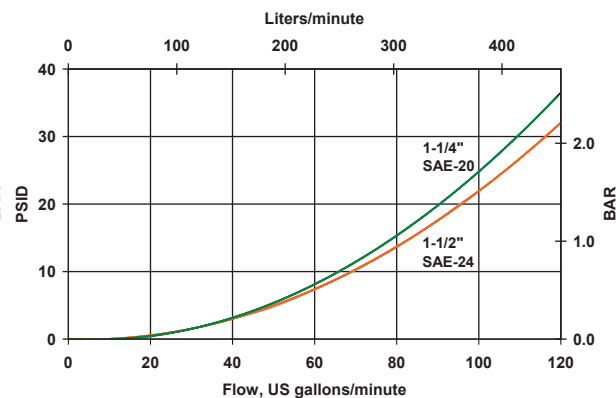
The PTI Technologies F1M Series of medium pressure hydraulic filter assemblies utilize PG Series filter elements. Please see the PG Series Filter Element brochure for flow vs. pressure drop data.

Flow Rate/Pressure Drop Curves

Housing F1M 015/025/030 - Flow vs Pressure Drop

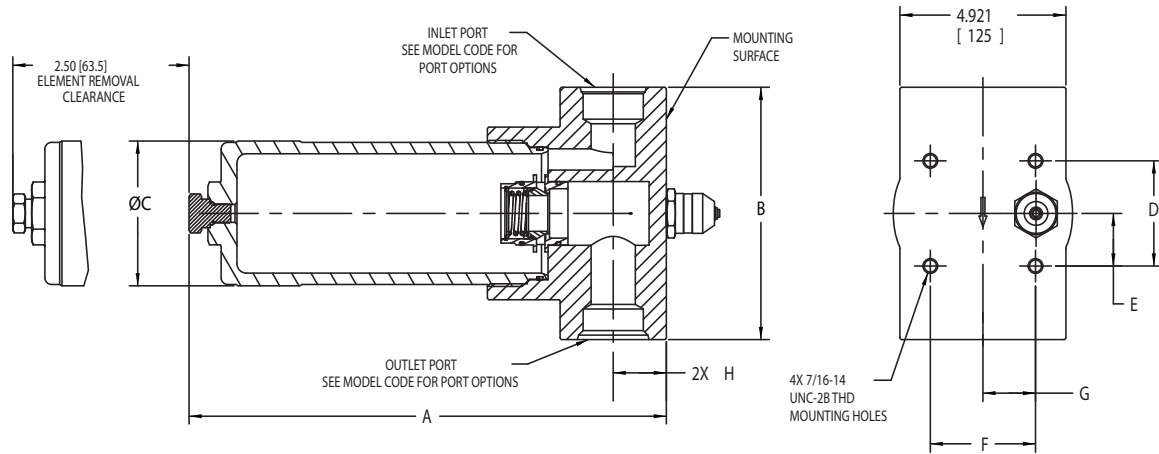


Housing F1M 050/080/120 - Flow vs Pressure Drop



Pressure drop curves are based on 150 SUS (32 cSt) petroleum base hydraulic fluid of 0.9 S.G.
Filter Assembly ΔP = Housing ΔP + Element ΔP

Dimensions in Inches (mm)



Dimensions in inches (millimeters)

Nominal Flow	Dim A	Dim B	Dim C	Dim D	Dim E	Dim F	Dim G	Dim H
-015	6.93 (176.0)	3.94 (100.0)	2.44 (62.0)	3.06 (77.8)	1.53 (38.9)	2.48 (63.0)	1.24 (31.5)	0.95 (24.0)
-025	9.96 (253.0)	3.94 (100.0)	2.44 (62.0)	3.06 (77.8)	1.53 (38.9)	2.48 (63.0)	1.24 (31.5)	0.95 (24.0)
-030	12.71 (322.8)	3.94 (100.0)	2.44 (62.0)	3.06 (77.8)	1.53 (38.9)	2.48 (63.0)	1.24 (31.5)	0.95 (24.0)
-050	11.24 (285.6)	7.48 (190.0)	4.33 (110.0)	3.12 (79.2)	1.56 (39.6)	3.12 (79.2)	1.56 (39.6)	1.58 (40.0)
-080	15.79 (401.0)	7.48 (190.0)	4.33 (110.0)	3.12 (79.2)	1.56 (39.6)	3.12 (79.2)	1.56 (39.6)	1.58 (40.0)
-120	20.35 (517.0)	7.48 (190.0)	4.33 (110.0)	3.12 (79.2)	1.56 (39.6)	3.12 (79.2)	1.56 (39.6)	1.58 (40.0)

Filter Assembly (Housing only) Weight

Size	015	025	030	050	080	120
Weight	3.4 lbs (1.5 kg)	4.0 lbs (1.8 kg)	4.4 lbs (2.0 kg)	14.8 lbs (6.7 kg)	16.8 lbs (7.6 kg)	18.5 lbs (8.4 kg)

Ordering Information

Assembly:

F1M XXXXX-X X X X X X

TBL 1 TBL 2 TBL 3 TBL 4 TBL 5 TBL 6 TBL 7 TBL 8 TBL 9

Code	Nominal Flow
015	15 gpm (57 lpm)
025	25 gpm (95 lpm)
030	30 gpm (114 lpm)
050	50 gpm (189 lpm)
080	80 gpm (303 lpm)
120	120 gpm (454 lpm)

Code	Micron Rating	Media
N	No Filter Element	

Code	Collapse Rating
N	No Filter Element

Code	Material
B	Buna
E	Ethylene Propylene
V	Viton®

Viton® is a registered trademark of Dupont

Code	Option	Application
L	3/4" SAE (-12)	F1M 015/030
M	1" SAE (-16)	F1M 015/030
N	1-1/4" SAE (-20)	F1M 050/080/120
P	1-1/2" SAE (-24)	F1M 050/080/120
4	1-1/2" SAE Flange-Code 61	F1M 050/080/120

Code	Option
O	None

Code	Option
N	None
D	Visual 75 psid (5.2 bar) ± 10%
M	Visual/Electrical 75 psid (5.2 bar) ± 10%

Code	Option
N	Non-Bypass
L	100 psid (6.9 bar) ± 10%

Code	Option
D	Drain Port

Element:

PG-XXX-X X-X

TBL 1 TBL 2 TBL 3 TBL 4

Code	Nominal Flow
015	15 gpm (57 lpm)
025	25 gpm (95 lpm)
030	30 gpm (114 lpm)
050	50 gpm (189 lpm)
080	80 gpm (303 lpm)
120	120 gpm (454 lpm)

Code	Micron Rating	Media
V	$\beta_{4,2(c)} \geq 1000$	Glas-Tech III®
G	$\beta_{7(c)} \geq 1000$	Glas-Tech III®
H	$\beta_{9(c)} \geq 1000$	Glas-Tech III®
K	$\beta_{15(c)} \geq 1000$	Glas-Tech III®
J	$\beta_{24(c)} \geq 1000$	Glas-Tech III®
L	$\beta_{35(c)} \geq 1000$	Glas-Tech III®

Code	Collapse Rating
H	300 psid (21 bar)
U	3,000 psid (207 bar)

Code	Option
Omit	Standard Element
W	DryPak® Configuration

For more info email: fluidpower@ptitechnologies.com



PTI Technologies Inc.
501 Del Norte Boulevard
Oxnard, California 93030
800-331-2701 • 805-604-3700
www.ptitechnologies.com



©2021 An ESCO Technologies Company All Rights Reserved.

PTI Technologies Inc is certified to ISO standards